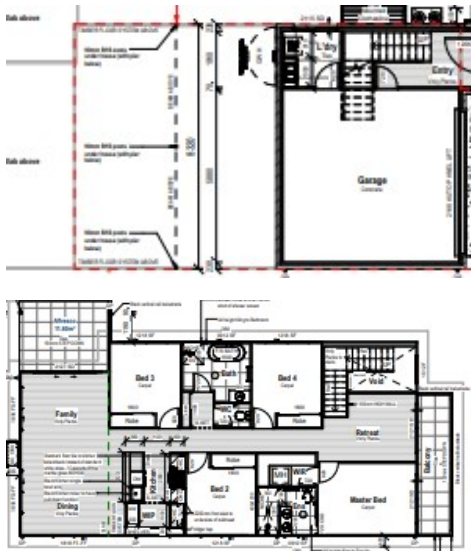


# House & Land Package—Vue Valleyview 216 Skillion

Artist impression only



## \$1,069,609

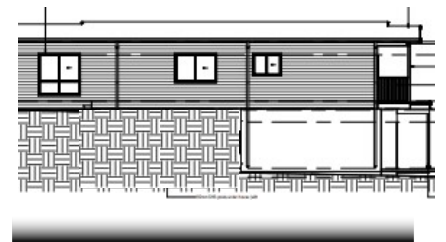
Floor Area

216.08m<sup>2</sup>

House Size

Width 8.32m

Depth 18.49m



### Stroud Homes Fully Loaded inclusions

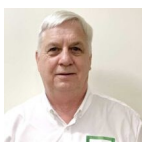
- Upgraded Skillion Facade
- 900mm Westinghouse appliance
- Stainless steel dishwasher
- Soft close to kitchen and butler's pantry
- Floor coverings throughout
- 20mm Caesarstone bench tops
- 2.74m ceiling heights GF & FF
- Upgraded Front entry door,
- Daikin Ducted Air Conditioning
- Flyscreens to all sliding windows
- Tiles to porch and alfresco area
- 60m2 aggregate driveway
- Downlights to living areas, bedrooms and bathrooms
- Bulkheads above overhead cupboards

### Site

- H1 class slab
- N3 wind rating
- Site works
- Fencing and landscape allowance

### Land

Lot 5 | \$485,000 | 458



Call Peter Chapple today, your local new home consultant

📞 0404 889 094 | [peter.chapple@stroudhomes.com.au](mailto:peter.chapple@stroudhomes.com.au)



Feels like home

Stroud Homes | ABN: 54 684196 138 | Builders Lic No: 15507529

\*Photos used in the advertisement are not photos of the actual home. Refer to each individual quote for information on finishes and inclusions.

This land may not have been released. Exact land cost, size and shape are based on indications provided by land developer. Contact Stroud Homes for more information.

as at 28-4-2025